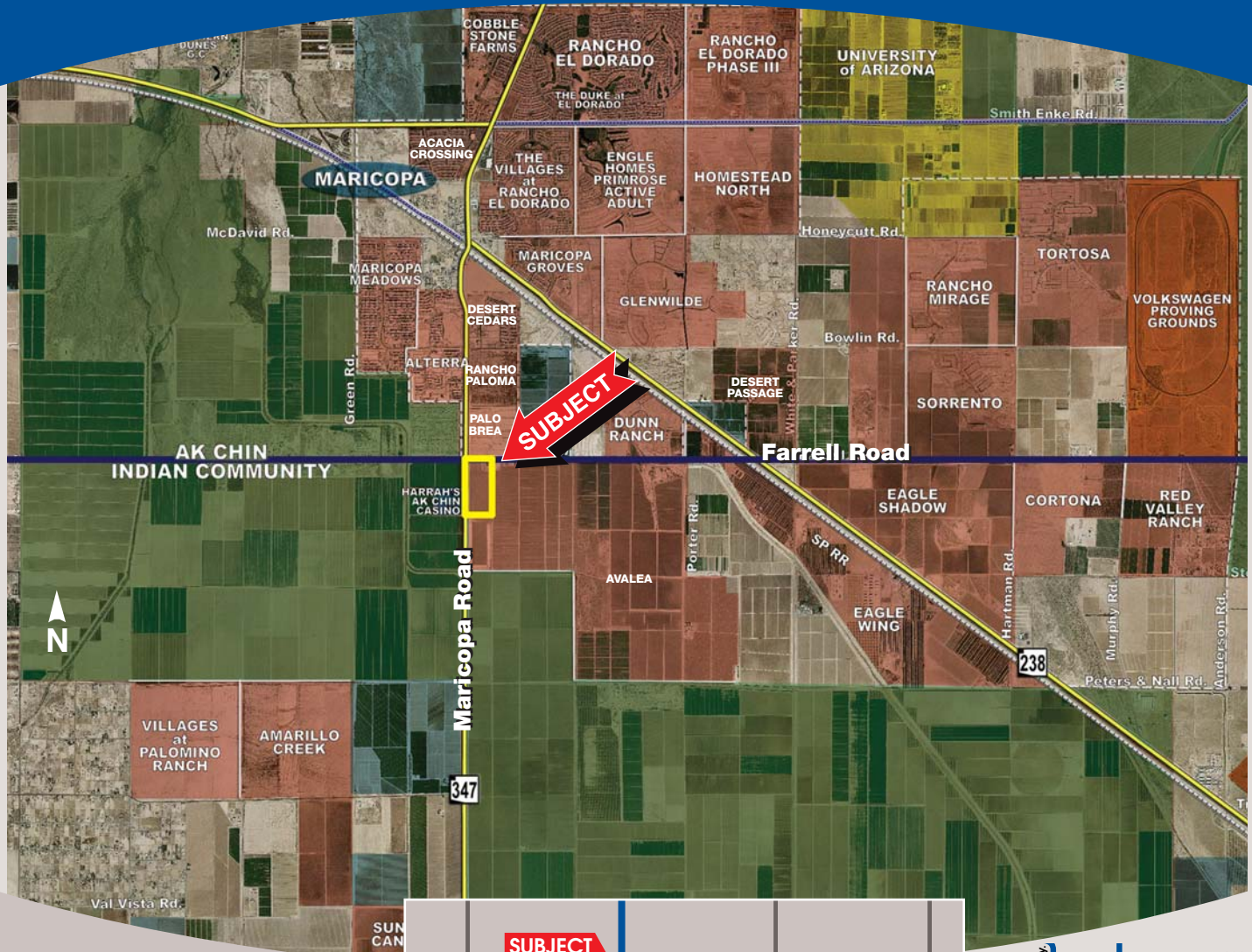


Vestar

Maricopa Towne Center



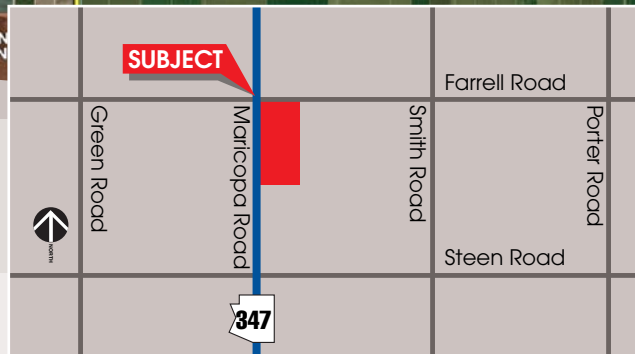
Location
 Southeast Corner
Highway 347 and Farrell Rd.
 Maricopa, Arizona

Project Features

- 950,000 gross leasable square feet
- Regional Lifestyle and Power Center
- Located on the 347 Highway corridor that serves the cities of Maricopa and Stanfield

Area Features

- Approximately 100,000 active and planned housing units equating to an additional 315,000 people within the trade area
- Thirty-six new master-planned communities located within 5 miles
- Located near the new master-planned communities of Rancho El Dorado, Alterra, Avalea and Glennwilde
- City of Maricopa processed over 8,000 single-family permits in 2005 and is projecting an additional 20,000± people annually for the next 7 years.



VESTAR DEVELOPMENT CO.
 2425 East Camelback Road, Suite 750
 Phoenix, Arizona 85016
 (602) 866-0900 • fax (602) 955-2298
www.vestar.com

Maricopa Towne Center

